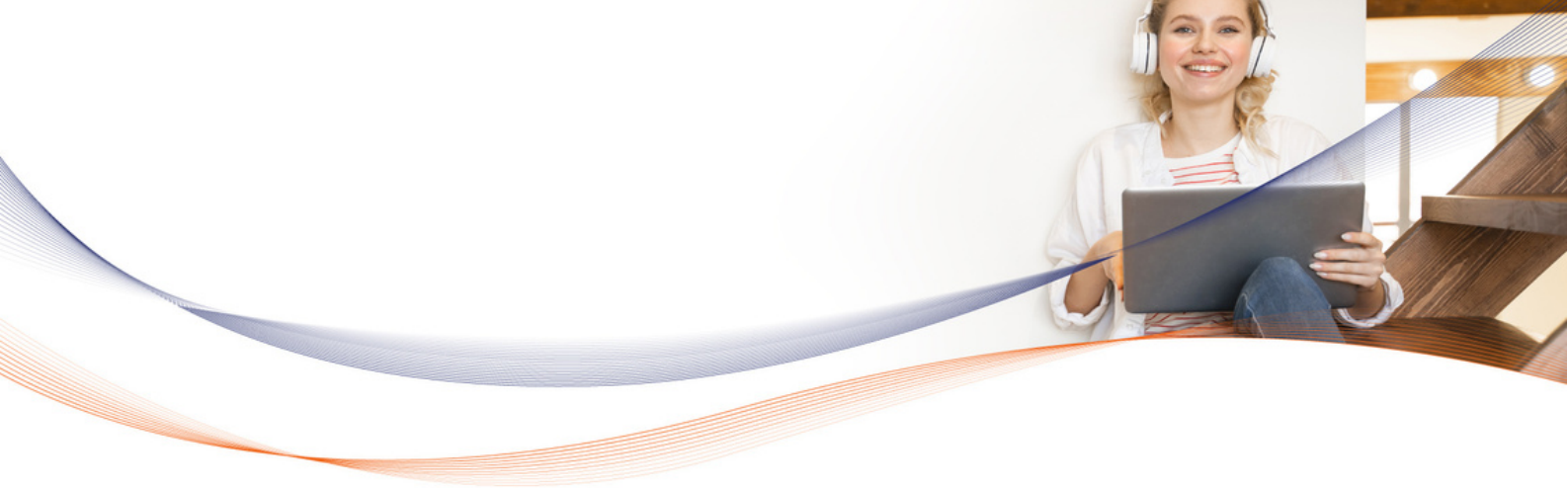




Safe Mail

PRIVATE
CLOUD BASED

EMAIL FILTERING FOR BUSINESS



PRIVATE CLOUD BASED EMAIL FILTERING FOR BUSINESS.

Email represents the single critical utility of today's companies driving productivity, efficiency and cost savings. Unfortunately, bundled within its many advantages are significant threats which have the capacity to destroy your network and incur serious legal and financial repercussions for you and your business. The simple act of opening an email or clicking a link can release payloads of viruses which apart from demolishing your networks internal structures, can also unleash devastating consequences for your clients by fulfilling their basic viral nature; that of spreading secretly from one computer to another with malicious intent

WHAT IS SAFE MAIL?

Safe Mail is a full-service, cloud based email security solution which protects your business, your employees and your clients. The private cloud solution can be set up in the Security Operation Center (SOC) cloud or in your own datacentre is extraordinarily simple to manage, and provides 99.97% spam detection, virus and malware blocking, authentication control, outbound scanning as well as robust reporting structures. Central to everything we do is our service commitment to our worldwide client base, start our free trial today and see why so many companies trust us with their business

EMAIL CONTENT CONTROL AND PROTECTION FOR BUSINESS.

Safe Mail protects the organisation from threats by managing the organisation's email traffic and regulating the email that employees receive by blocking spam email, viruses and malware.

Safe Mail is ideal for larger organisations and service providers as it provides all of the benefits of a gateway solution with virtually none of the technical overheads.

WHY USE SAFE MAIL?

Safe Mail has been purpose-built for enterprises and service providers to enable easily protect their users and network from spam email, viruses and malware.



PRODUCT FEATURES

MANAGEMENT FEATURES:

EXTENSIVE API

Safe Mail has an extensive API which enables you to integrate with third party management products.

SCALABLE

Safe Mail is easily scalable and can grow as your business expands. It has the capacity to facilitate unlimited users and unlimited domains and allows multilevel administration including user level, domain level and groups of domains etc.

OUR CLOUD OR YOURS

Safe Mail is deployed as a cloud based service. It can be hosted in the SOC as a dedicated private cloud or in the service providers' data centre.

REPORTING SUITE

Our SOC can send quarantine reports to users at specified times and intervals. The quarantine report contains a list of emails which have not been sent to the user because they potentially contain spam or viruses. The end user can decide to deliver, whitelist or delete the emails in the quarantine report.

CUSTOMER FEATURES:

SPAM FILTERING

Safe Mail filters your organisation's email traffic to stop email spam from reaching your users. The solution guarantees 99.97% spam detection through multi-layered spam analysis including; real time blacklists (RBLs), lists of websites that were detected in unsolicited emails (SURBLs), sender policy frameworks and Bayesian analysis.



This coupled with a low false positive rate of 0.03% allows you to rest easy knowing your users never lose genuine email, but are protected from unsolicited email.

VIRUS AND MALWARE BLOCKING

The multi award winning solution contains double antivirus protection; Bitdefender and Clam AV which serve to block viruses and malware trying to infiltrate your network through email.

WHITE LISTING / BLACK LISTING

The solution allows you to whitelist / blacklist sender email addresses meaning you can choose to always allow/ always block mail from a particular email address.

RECIPIENT VERIFICATION

Safe Mail offers a number of Recipient Verification types they are: Dynamic Recipient Verification (DRV), LDAP, list based and specify regular expression verification. Once a mail is delivered to the Safe Mail cloud, it will validate the email address against the mail server thus rejecting fake emails and spam.

OUTBOUND SCANNING

AUTHENTICATION

The Web Authentication settings allows you to control for each Domain what Authentication Method will be used when a user attempts to login. The following authentication methods are supported: Internal (default), LDAP, SQL server, POP3, and IMAP.

The support of external authentication modules ensures that when possible users won't have to remember multiple passwords. All login attempts will be directed to the appropriate authentication server for that domain.



SAFE MAIL SPECIFICATIONS

SPAM FILTERING

- » The solution guarantees 99.97% spam detection through multi-layered spam analysis including;
 - Real time blacklists (RBLs)
 - Lists of websites that were detected in unsolicited emails (SURBLs)
 - Sender policy frameworks
 - Bayesian analysis,
- » Low false positive rate of 0.03%.

VIRUS AND MALWARE BLOCKING

- » Safe Mail contains double anti-virus protection;
- » Bitdefender and Clam AV which serve to block viruses and malware trying to infiltrate your network through email.

WHITE LISTING / BLACK LISTING

- » You can choose to always allow/always block mail from a particular email address.

REPORTING

- » Quarantine reports to users at specified times and intervals. The quarantine report contains a list of emails which have not been sent to the user because they potentially contain spam or viruses. The end user can decide to deliver, whitelist or delete the emails in the quarantine report.

OUTBOUND MAIL SCANNING

- » Safe Mail can also scan your outbound mail, thus preventing potential IP blacklisting.



WHITE LISTING / BLACK LISTING

» You can choose to always allow/always block mail from a particular email address.

REPORTING

» Quarantine reports to users at specified times and intervals. The quarantine report contains a list of emails which have not been sent to the user because they potentially contain spam or viruses. The end user can decide to deliver, whitelist or delete the emails in the quarantine report.

CLOUD BASED

» Safe Mail is deployed as a cloud based service. It can be hosted in the SOC cloud as a dedicated private cloud or in the service providers' data centre.

RECIPIENT VERIFICATION

» Safe Mail offers a number of Recipient Verification types. They are:

- Dynamic Recipient Verification (DRV)
- LDAP
- List based
- Regular expression

» These all help to keep your license count correct.

SCALABLE

» Safe Mail is easily scalable and can grow as your business expands. It has the capacity to facilitate unlimited users and unlimited domains and allows multilevel administration including user level, domain level and groups of domains etc.

EXTENSIVE API

» Safe Mail has an extensive API which enables you to integrate with third party management products.



AUTHENTICATION

» The web authentication settings allows you to control for each domain what the authentication method will be used when a user attempts to login.

» The following authentication methods are supported:

· Internal (default) · LDAP · SQL server · POP3 · IMAP

»The support of external authentication modules ensures that when possible users won't have to remember multiple passwords. All login attempts will be directed to the appropriate authentication server for that domain.

ABOUT THE SOC

Our SOC is 100% focused on cybersecurity. In fact, that's all we do. We are fully committed to combating cyber threats to ensure that our customers are fully protected.

Our specialists monitor more than 1,000 cyber threats every day. By investing in the best technology and the brightest geniuses in the industry, we provide effective detection, analysis and response to cyberattacks. This means that we identify the attack as it occurs and take the right steps to eliminate the risk to you and your information systems.

CONTACT DETAILS

If you are interested in learning more about Safe Mail, please reach out to us by phone or email and one of our experienced sales people will take the time to
Mail: office@cyberlevelins.com